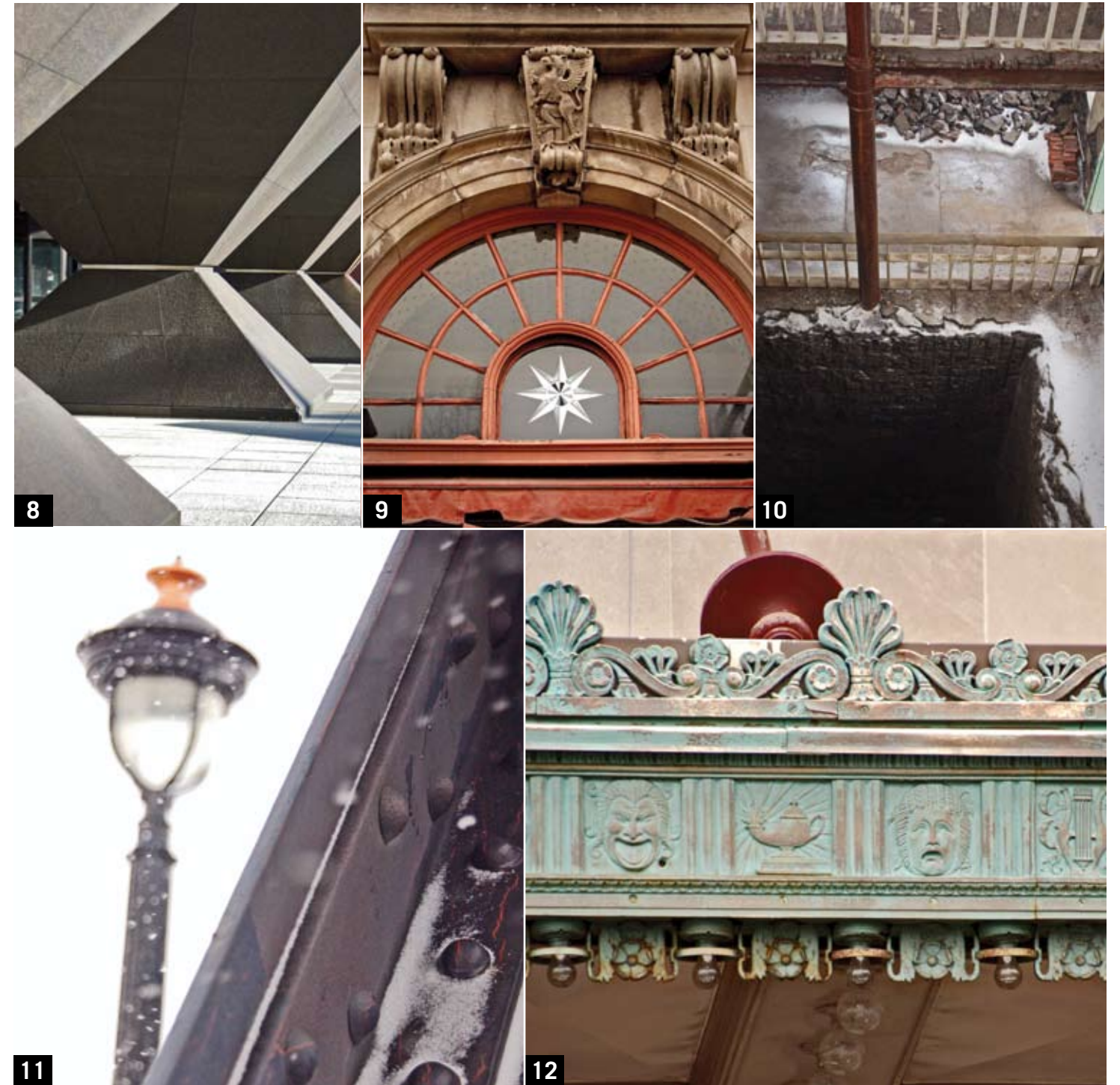
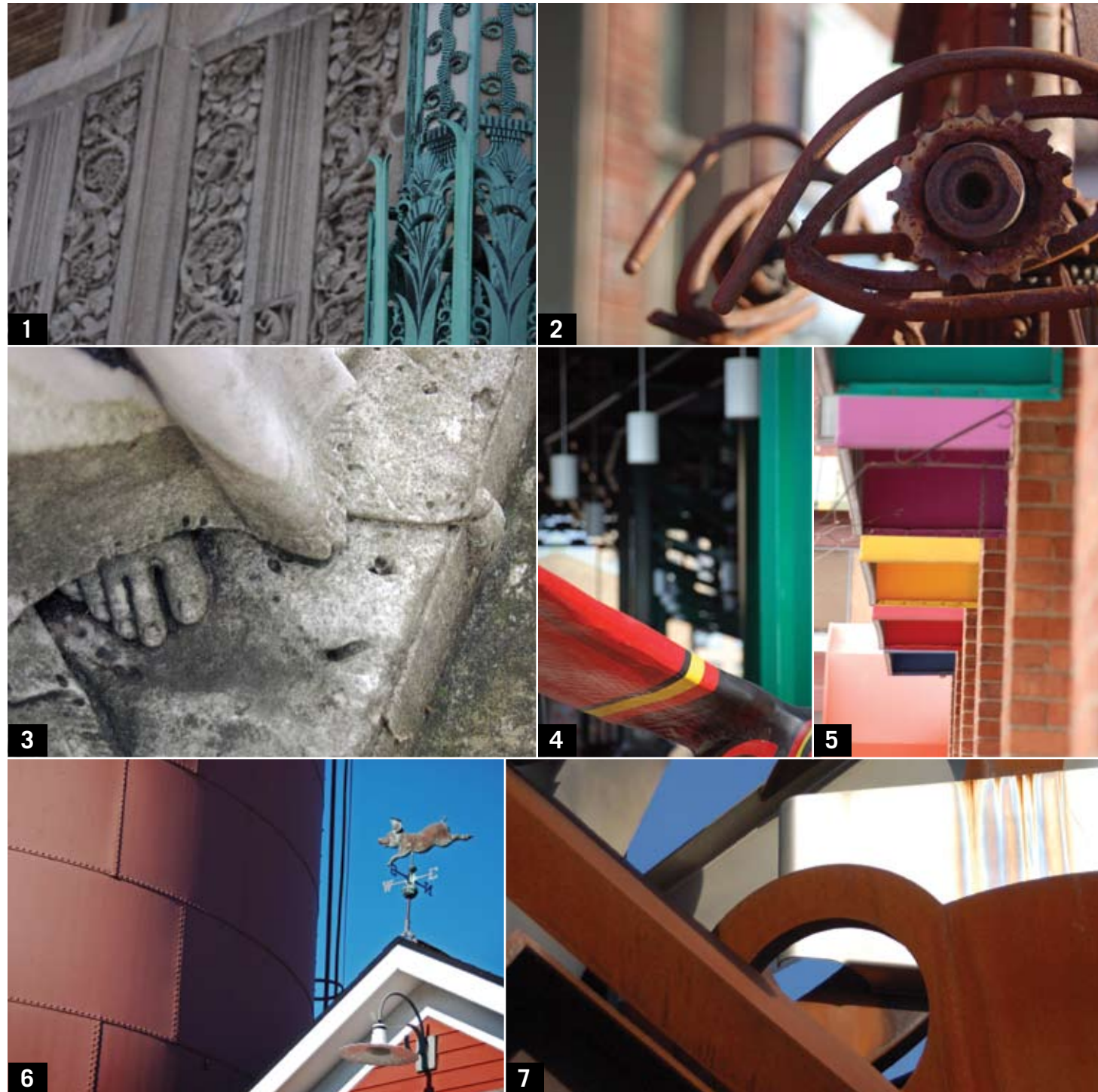


# IT'S ALL IN THE DETAILS

From monolithic downtown buildings to quaint canalside destinations, the greater Rochester area is full of character. But sometimes when we fixate on the larger locations we miss some of the cool, whimsical details that make them special. Below find a collection of images from some of the most notable places in and around Rochester. Can you guess where they were taken? Check page 36 for the answers. If you guessed right, congratulations; you're a true Rochesterian. If not, consider adding these landmarks to your list of places to explore as you get to know the area.



## LANDMARK ANSWERS

1: **ROCHESTER AUDITORIUM CENTER** 875 East Main St., Neighborhood of the Arts

2: **PARKING METER TOTEM** South Ave., South Wedge

3: **MT. HOPE CEMETERY** 1133 Mount Hope Ave., Mount Hope neighborhood

4: **FRONTIER FIELD** 1 Morrie Silver Way, High Falls District

5: **VILLAGE GATE** 274 North Goodman St., Neighborhood of the Arts

6: **SCHOEN PLACE** Along the canal between State and North Main streets, Pittsford

7: **THE SENTINEL SCULPTURE** Rochester Institute of Technology campus, Henrietta

8: **XEROX TOWER** 100 South Clinton Ave., Downtown Rochester

9: **HIRAM SIBLEY BUILDING** Corner of East and Alexander streets, East End

10: **ABANDONED MILL** High Falls District

11: **FORD STREET BRIDGE** Intersection of Mt. Hope Ave. and Exchange Blvd., Corn Hill neighborhood

12: **EASTMAN THEATRE** 60 Gibbs St., East End